

SUT LAC - present status and activities

Miroslava Haque Igondová, Ján Hefty,
Martina Šliková

miroslava.igondova@stuba.sk

SUT LAC - network configuration



SUT LAC operates since autumn 2002 (28 stations)

Current status: 47 stations (7 former)

Stations situated mostly in central Europe and near sea areas.



Processing strategy

- Software : Bernese GNSS Software, version 5.0 -> **5.2 (soon)**
- Orbits and EOPs : IGS08 final
- Observations : GPS
- Elevation Cutoff : 10°
- Antenna PCV Model : absolute (based on IGS08)
- Ambiguity Resolution: QIF
- Troposphere : Niell mapping function, gradients
- Ocean Loading : FES2004
- Reference Frame : IGS08
- Reference Point : BOR1
- Products generated :
 - SUTwww7.SNX weekly snx file
 - SUTwww7.SUM weekly summary file
 - SUTwww7d.SNX daily snx file
 - SUTwww7d.TRO daily troposphere solution



Products

- **daily** solution: CRD, COV, SNX_COV, SNX_NEQ, ION, INX, TRO, TRP
- **weekly** combination: CRD, COV, SNX_COV, SNX_NEQ, OUT, SUM
- **4-hour** solution: CRD, COV

EPN reprocessing



- SUT LAC participated in EPN-repro1 (39 stations)

- EPN-repro2 ?

(BSW 5.2 not installed yet)



Densification of EPN in Central Europe - CEPER

56°

47 EPN stations

14 non-EPN stations

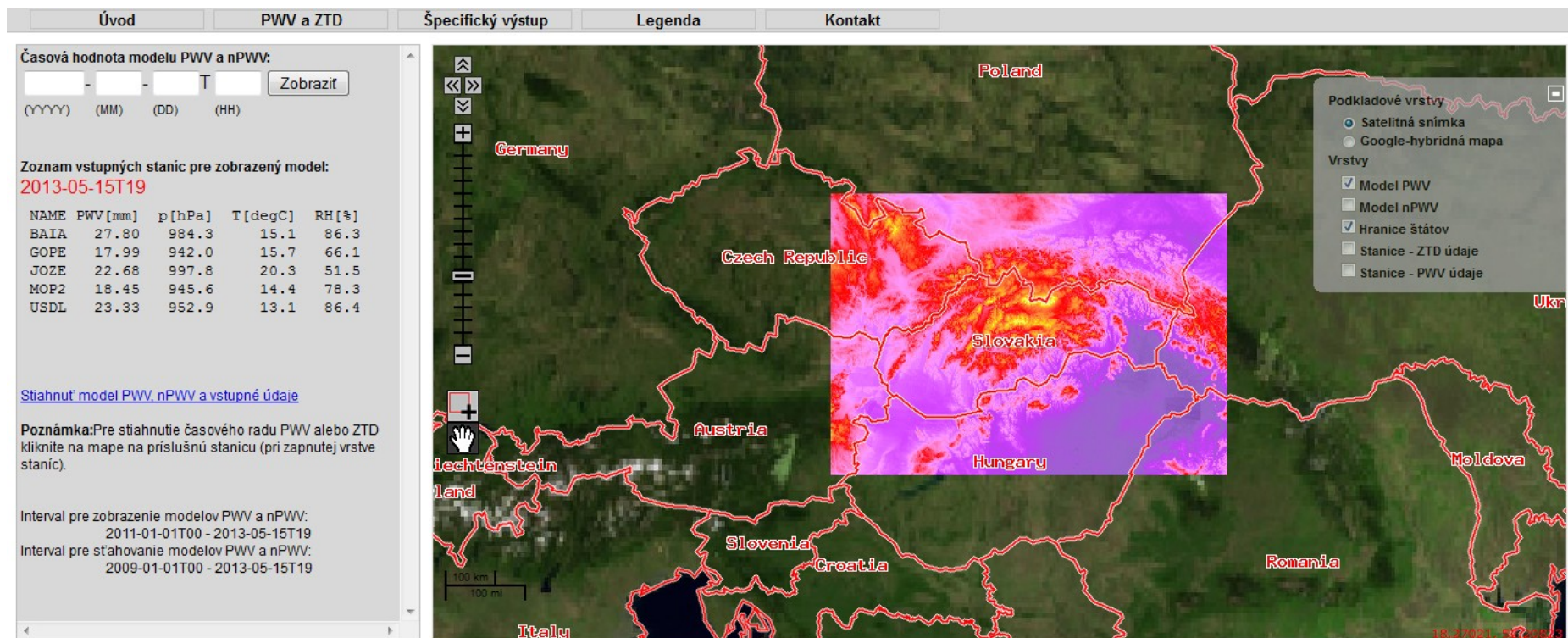
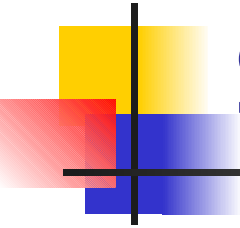
- situated mostly in central Europe and Balkan peninsula
- standard postprocessing solution & NRT solution
- processing strategy following EPN solution
- reprocessed 1996 to



CEPER – processing products

- Postprocessing solution: CRD, COV, SNX_COV, SNX_NEQ, ION, INX, TRO, TRP
- NRT solution: CRD, COV, SNX_COV, TRO, TRP

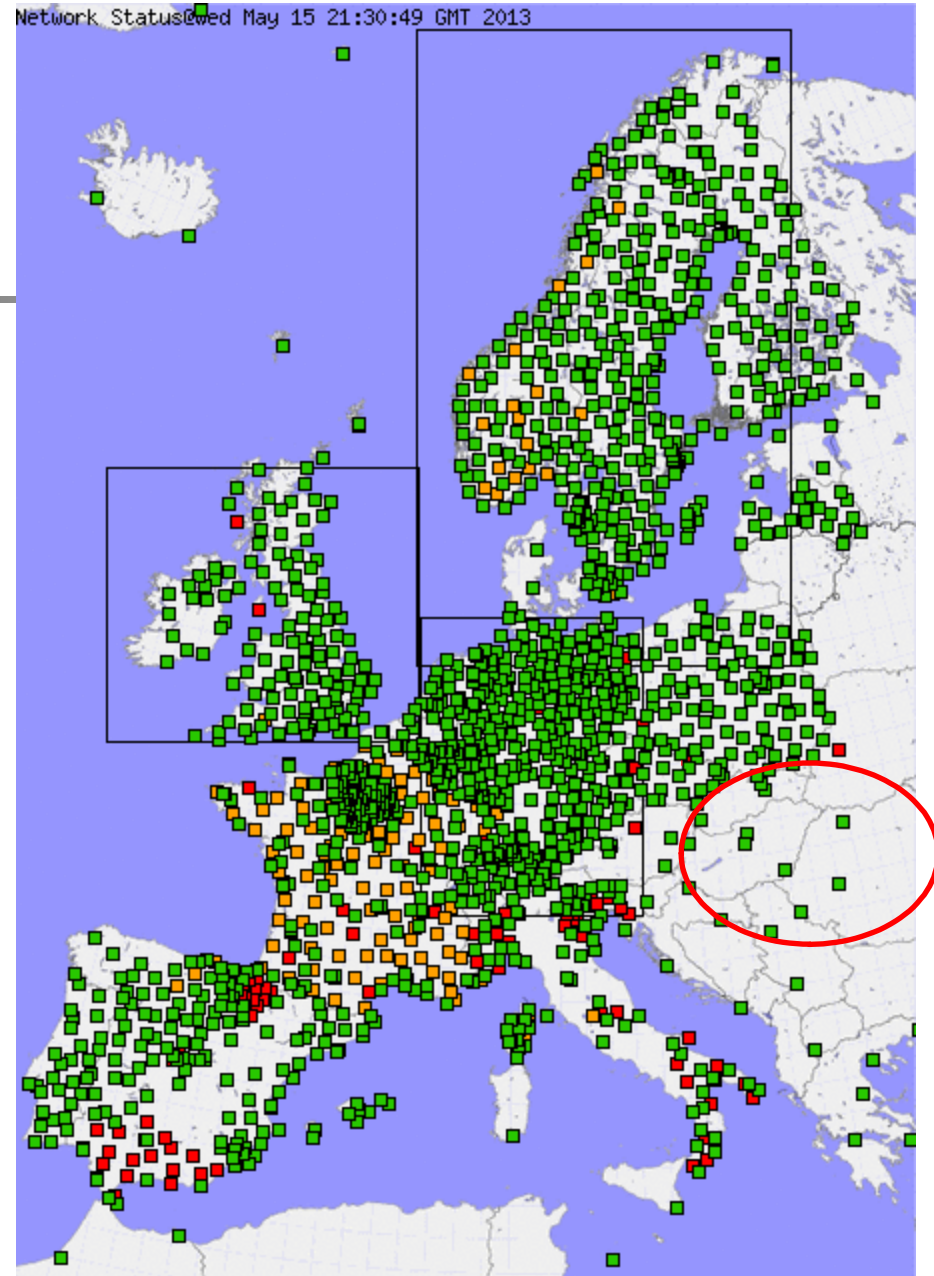
Troposphere - PWV over Slovakia



PWV (mm) interpolated over Slovakia wrt terrain heights

Troposphere GNSS4SWEC

- CEPER -> ZTD parameters available in NRT
- Possible densification of E-GVAP network in East Europe (Slovakia, Romania, ...)





Thank you for the attention

miroslava.igondova@stuba.sk

jan.hefty@stuba.sk